

PARTS CATALOG

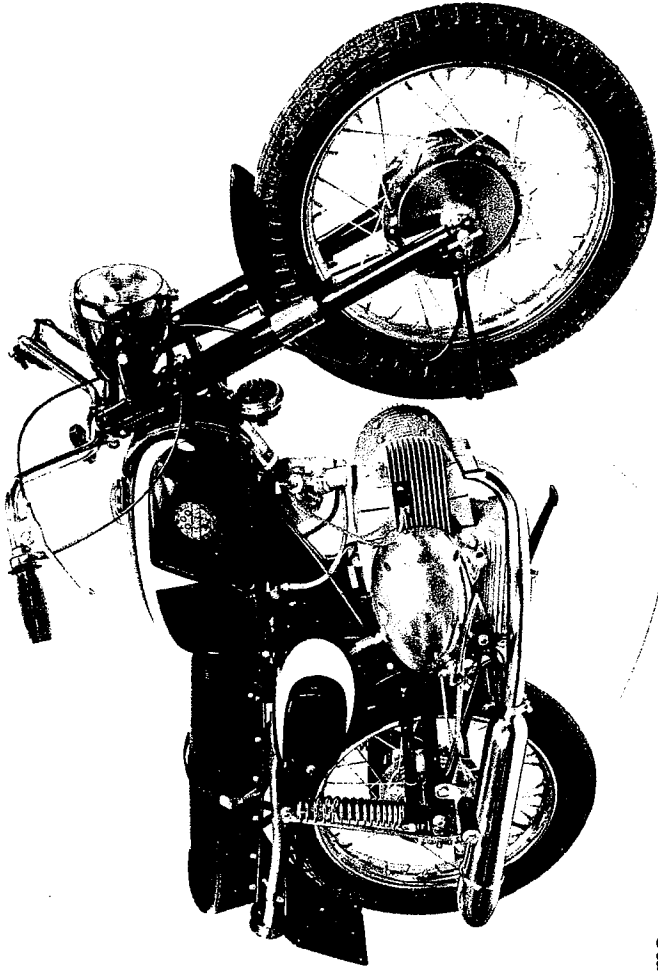
BENELLI

5 SPEED

125 cc SPRITE

&

250 cc BARRACUDA



IMPORTANT

When ordering parts indicate clearly

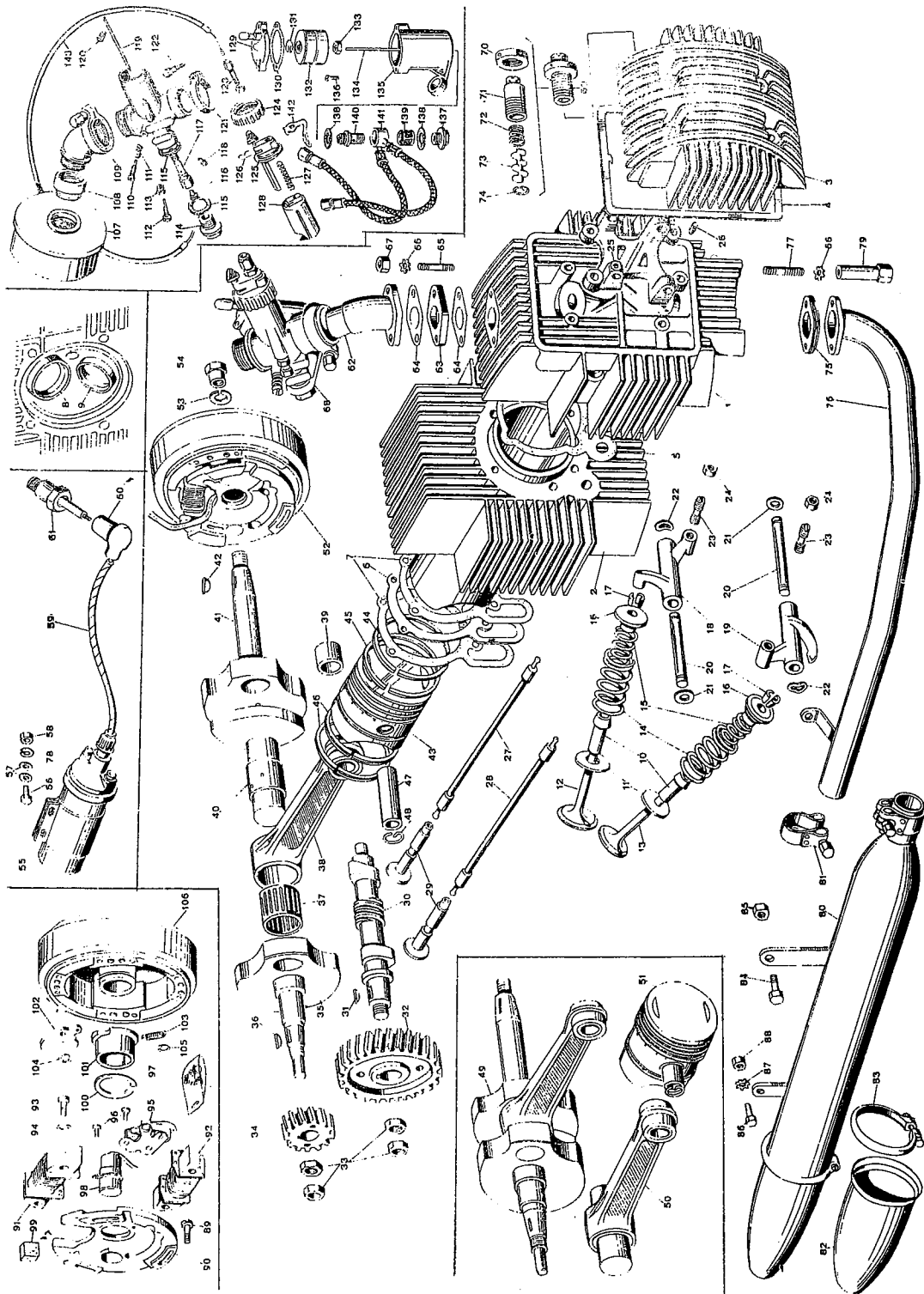
- 1) Picture and Part Number
- 2) Description of Part
- 3) Description of Motorcycle and Frame

**USE ONLY
ORIGINAL
FACTORY
PARTS
\$1.00**

COSMOPOLITAN MOTORS, INCORPORATED

JACKSONVILLE & MEADOWBROOK ROADS, HATBORO, PA. 19040 (215) OS 2-9100

SOLE U.S. IMPORTERS AND DISTRIBUTORS OF BENELLI MOTORCYCLES / PIRELLI TIRES / AGV AND COSMO HELMETS



125cc and 250cc Barracuda

Engine Parts

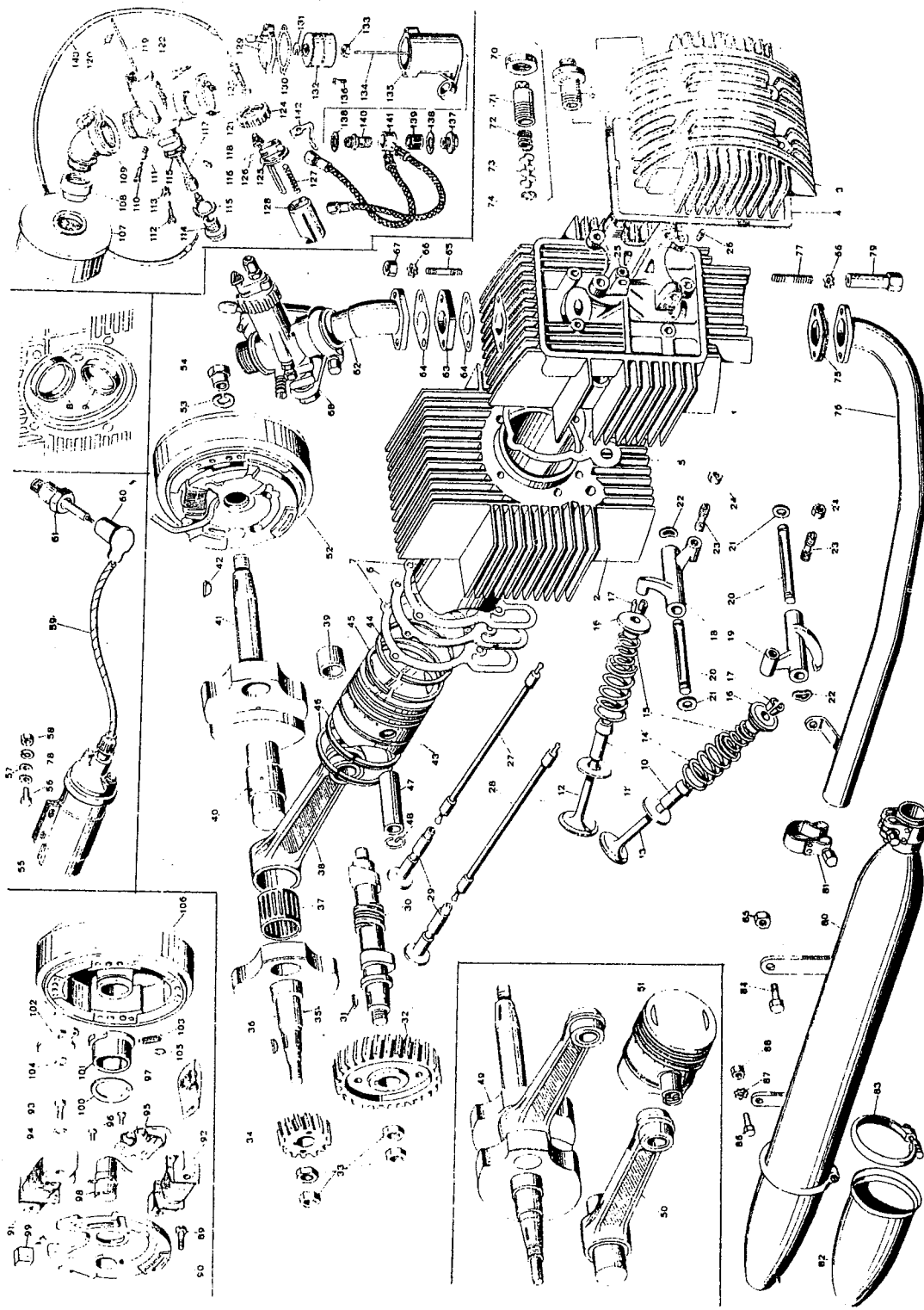
Table #1

Ref. No.	Part No.	Part No.	Description	Ref. No.	Part No.	Part No.	Description
125cc	250cc	125cc		No.	125cc	250cc	
1	2838/1	3922	Cylinder head	31	MU 164	MU 164	Woodruf key
2	3791/1	3937	Cylinder	32	3656	3656	Cam gear
3	2420/2	2420/2	Cover	33	2313	2313	Nut
4	2421	2421	Gasket	34	2311/M	2311/M	Pinion
5	3934	3934	Cylinder head gasket	35	3994	3954	R. H. half crank shaft
6	2377	3935	Base gasket	36	MU 8024	MU 8024	Woodruf key
7	3875	3936	Paper gasket	37	3829/A	3829/A	Roller cage complete
8	3665	2826	Intake valve seat	38	3442	3909	Connecting rod
9	3822	2837	Exhaust valve seat	39	3238	3924	Piston pin bushing
10	3204	3823	Valve guide	40	3434	3724	Crank pin
11	3203	3203	Lower plate	41	3995	3955	L. H. crank shaft
12	2839/O	3824	Intake valve	42	MU 3817	MU 3817	Woodruf key
13	2840/O	3825	Exhaust valve	43*	3696	3905	Piston std.
14	3208	3208	Outer valve spring	44*	2894	3906	Piston ring
15	3269	3269	Inner valve spring	45*	2894/1	3906/1	Special piston ring
16	3202	3202	Upper plate	46*	2310/O	3908	Oil ring
17	3201	3317	Valve keeper	47	2896	3925	Piston ring
18	3205	3205	Int. rocker arm	48	2892	2892	Circlip
19	3206	3206	Exh. rocker arm	49	3993	3953	Crank shaft
20	3199	3199	Rocker arm shaft	50	SD 4	SD 591	Lower end
21	3276	3276	Trust washer	51*	3696/C	3905/C	Piston complete
22	3275	3275	Spring washer	52**	SD 595	SD 596	Flywheel magneto
23	3366	3366	Adjuster	53	MU 9321	MU 9321	Lock washer
24	3367	3367	Adjuster nut	54	4066	4066	Flywheel nut
25	3198	3198	Support	55	I 9161	I 9161	H. T. coil
26	2656	2656	Locking screw	56	2522	2522	Screw 5 x 14
27	2819	2819	Intake push rod	57	MU 7559	MU 7559	Flat washer
28	2818	2818	Exhaust push rod	58	MU 3873	MU 3873	Nut
29	2871	2871	Cam follower	59	G 25	G 25	Spark plug wire
30	4034	4034	Cam shaft	60	G 7096	G 7096	Spark plug cup

*43 and *51 are available in these oversizes:
.008", .016", .024".

**Order part numbers SD 595 ADL75AN
SD 596 ADP79AN

*44, *45 and *46 supplied in sets 2894/S (125cc)
and 39068/S (250cc).



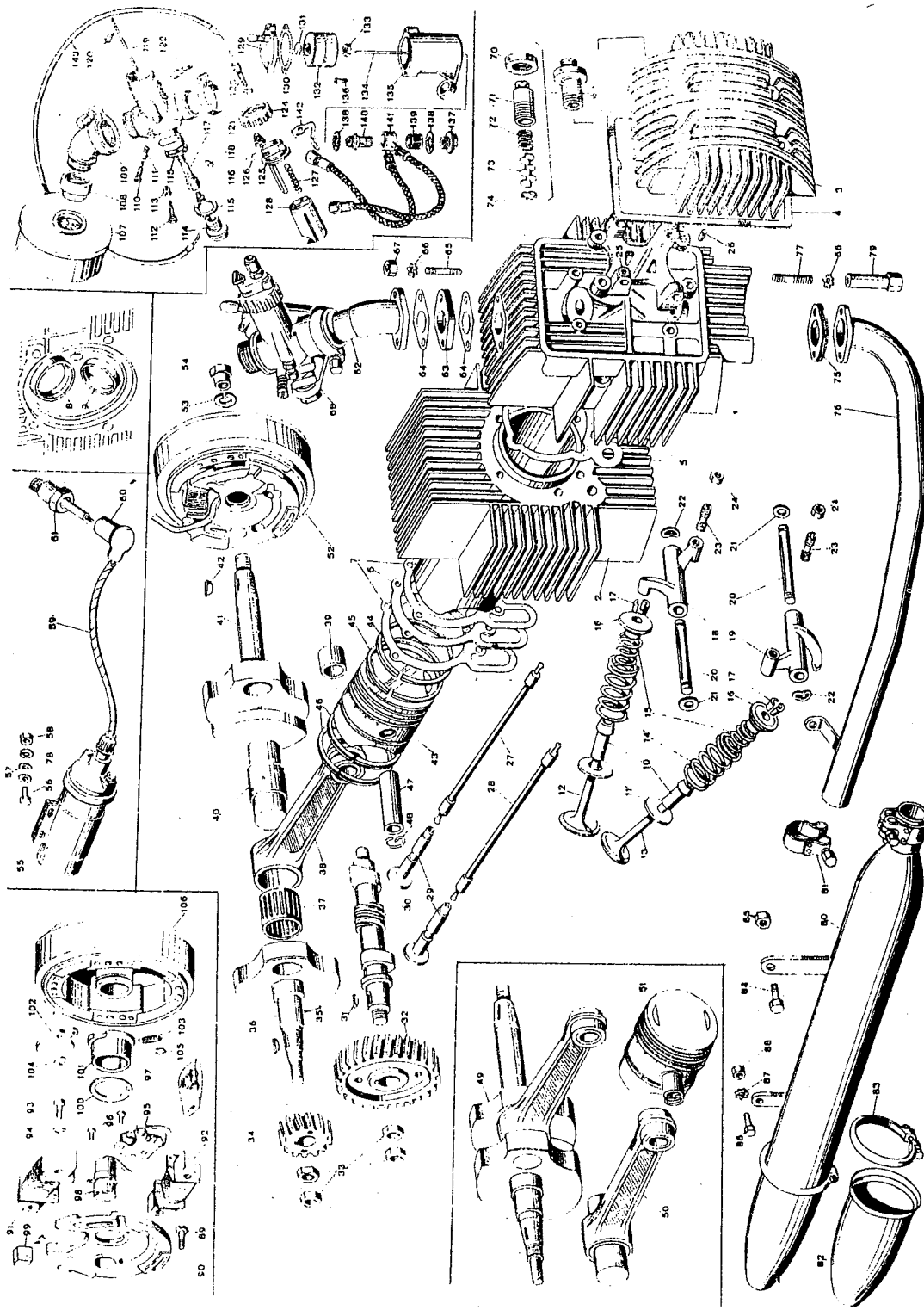
125cc and 250cc Barracuda

Engine Parts

Table #1

Ref. No.	Part No.	Description	Ref. No.	Part No.	Description
61	H 8508	Spark plug	93	SD 551/G	Screw
62	2866	Intake manifold	94	1984/H	Washer
63	2688	Insulating flange	95	SD 5/B	Point
64	2543	Gasket	96	G 221/3	Screw
65	2695	Stud	97	G 221/5	Screw and washer set
66	MU 432	Lock washer	98	1984/F	Condenser
67	2511	Nut	99	SD 551/E	Grease felt
68*	DE 4115	Carburetor	100	SD 5/D	Clip
69	SD 3	Breather complete	101	SD 5/CA	Cam
70	2698	Ring	102	I 9158/G	Platè
71	2697	Breather body	103	SD 5/E	Spring
72	2700	Spring	104	I 9158/I	Clip
73	2699	Breather plate	105	I 9158/L	Clip
74	2696	Clip	106	SD 592/A	Flywheel
75	2473	Exh. pipe gasket	107	10065/F35/1	DE10029/F20/1 Air filter
76	4102	Exhaust pipe	108	DE 1716	Spacer
77	2542	Stud	109	1701/C	Elbow with clamp
78	L 11	Lock washer	110	DE 2115	Mixture adj. screw
79	2550	Special nut	111	DE 1411	Spring
80	4095	Muffler	112	DE 1095	Slide Stop screw
81	SD 167	Clamp	113	DE 1096	Nut
82	SD 306/A	Muffler tail	114	DE 2086	Plug
83	H 8504/B	Tail clamp	115	DE 1382	Gasket
84	M 129	Allen screw (10x6)	116	1486/95	Main jet
85	MU 7929	Nut	117	2058	Needle jet
86	MU 614	Bolt	118	1488/40	Minimum jet
87	MU 589	Lock Washer	119	2343/10	Needle
88	MU 187	Nut	120	DE 1407	Clip
89	3594	Allen screw	121	1722	Clamp
90	SD 551/B	Baking plate	122	DE 1111	Screw
91	SD 593/A	Light coil	123	DE 1104	Cable Adjuster
92	SD 551/C	Ignition coil	124	DE 2324	Ring

*Order Pa. Nos. DE 4115 UB22BS -DE 4119 UB24BS2

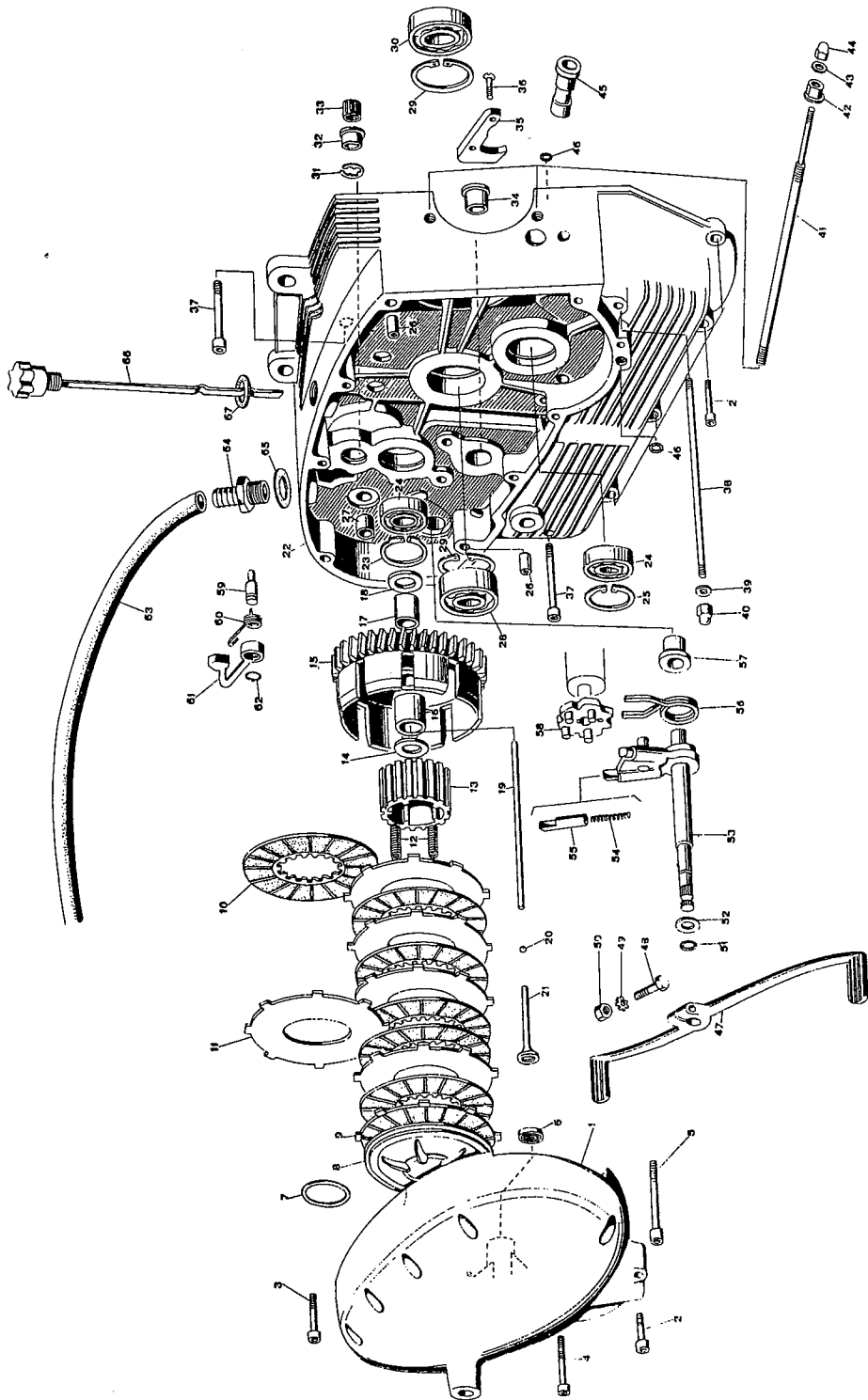


125cc and 250cc Barracuda

Engine Parts

Table #1

Ref. No.	Part No.	Part No.	Description	Ref. No.	Part No.	Part No.	Description
No.	125cc	250cc		No.	125cc	250cc	
125	DE 3584	DE 3584	Chamber cover				
126	DE 3570	DE 3570	Clip				
127	DE 2372	DE 2372	Spring				
128	4361/60	DE 4361/80	Slide				
129	DE 4100	DE 4100	Float bowl cover				
130	DE 1414	DE 1414	Gasket				
131	DE 1452	DE 1452	Clip				
132	DE 2189	DE 2189	Float bowl				
133	DE 3170	DE 3170	Nut				
134	DE 2117	DE 2117	Needle				
135	DE 4891	DE 4891	Float bowl body				
136	DE 1580	DE 1580	Screw				
137	DE 1494	DE 1494	Plug				
138	DE 1416	DE 1416	Gasket				
139	DE 1419	DE 1419	Filt er				
140	DE 3169	DE 3169	Needle seat				
141	3522	3522	2 way fuel line				
142	DE 5670	DE 5670	Lock plate				
143	3714/2	3714/2	Throttle cable				



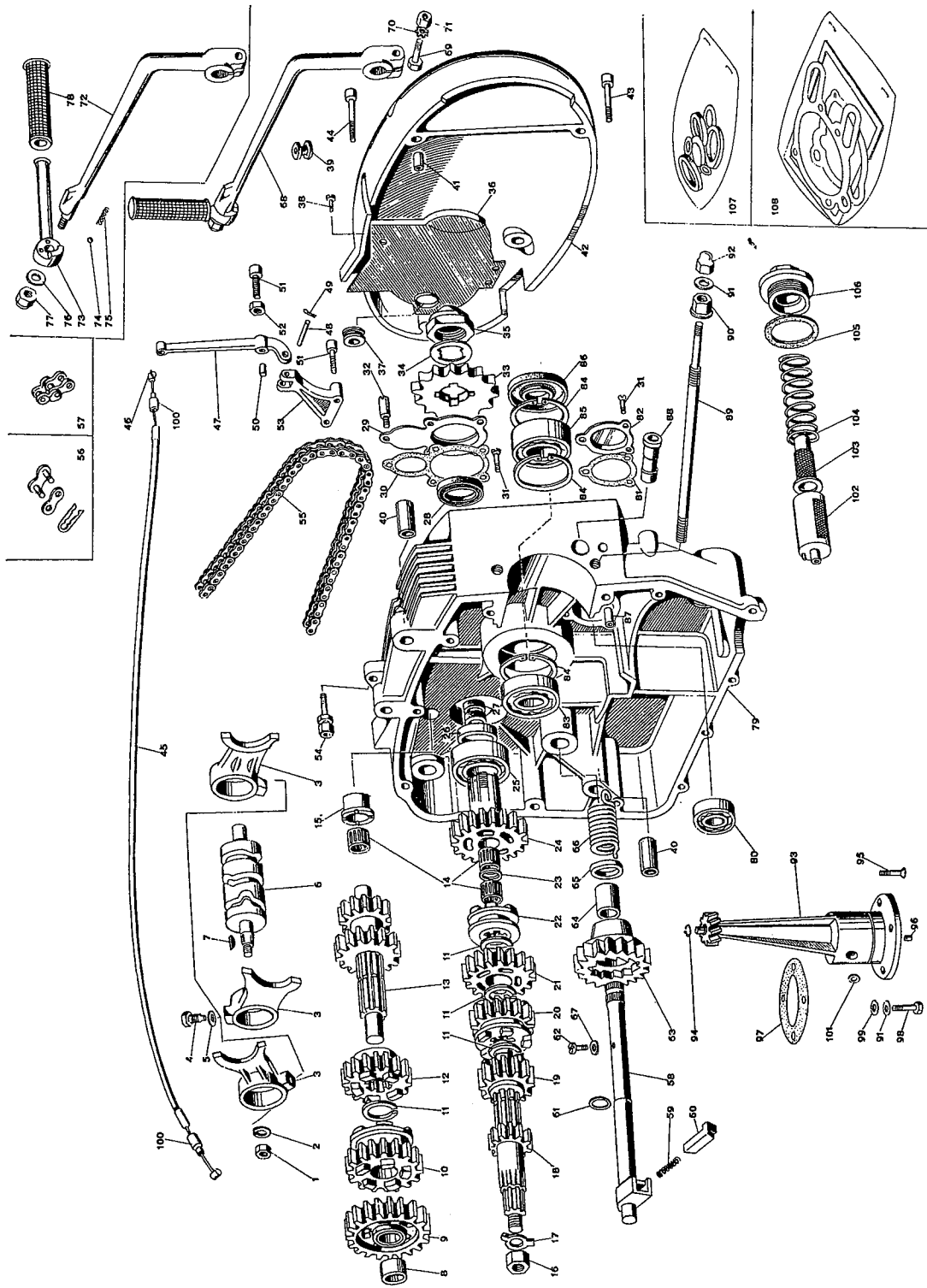
125cc and 250cc Barracuda

Engine Parts

Table #2

Ref. No.	Part No. 125cc	Part No. 250cc	Description	Ref. No.	Part No. 125cc	Part No. 250cc	Description
1	3938	3938	R. H. cover	35	3619	3619	Guide
2	MU 1414/1	MU 1414/1	Allen screw (6x25)	36	3620	3620	Screw (5x18)
3	MU 1224	MU 1224	Allen screw (6x10)	37	MU 9189	MU 9189	Allen screw (6x60)
4	MU 3732	MU 3732	Allen screw (6x45)	38	4063	4063	Stud
5	MU 1230	MU 1230	Allen screw (6x50)	39	3561	3561	Washer
6	2314	2314	Oil seal (10x19x7)	40	3796	3796	Nut
7	2090	2090	Ring	41	3320	3320	Stud
8	2209	2209	Pressure plate	42	3902	3902	Nut
9	3900	3900	Special clutch plate	43	MU 332	MU 332	Flat washer
10	2212	3537	Clutch plate	44	3926	3926	Nut
11	2211	2211	Steel plate	45	2294	2294	Bushing
12	3789	3789	Spring	46	2417	2417	Oil seal
13	2207	2207	Hub drum	47	4037	4037	Shifting lever
14	2208	3857	Trust washer	48	MU 330	MU 330	Screw (6x25)
15	3623	3623	Clutch crown	49	MU 432	MU 432	Lock washer
16	3625	3625	Bushing	50	2511	2511	Nut
17	3626	3626	Bushing	51	2562	2562	Oil seal
18	3587	3587	Trust washer	52	2366	2366	Trust washer
19	4055	3972	Clutch rod	53	3978	3978	Preselector complete
20	MU 185	MU 185	Ball 3/16	54	3183	3183	Spring
21	2093	2093	Short rod	55	3968	3968	Catcher
22	3951/125*	3951/250*	R.H. half crankcase	56	2365	2365	Spring
23	3209	3209	Seeger	57	2566	2566	Bushing
24	2244	2244	Bearing	58	3967	3967	Shifting drum
25	CS 46	CS 46	Seeger	59	2354	2354	Pin
26	2383	2383	Centering bushing	60	3663	3663	Spring
27	2353	2353	Bushing	61	3969	3969	Lever
28	MU 85	2874	Bearing	62	2355	2355	Ring
29	MU 1154	MU 1154	Seeger	63	4101	4101	Breather tube
30	2911	2911	Bearing	64	2705	2705	Connector
31	3918	3918	Seeger	65	2682	2682	Gasket
32	3930	3930	Steel bushing	66	2412	2412	Oil plug
33	3917	3917	Roller cage	67	2414	2414	Gasket
34	2248	2248	Bushing				

*Supplied only with 3952/125. 3952/250.

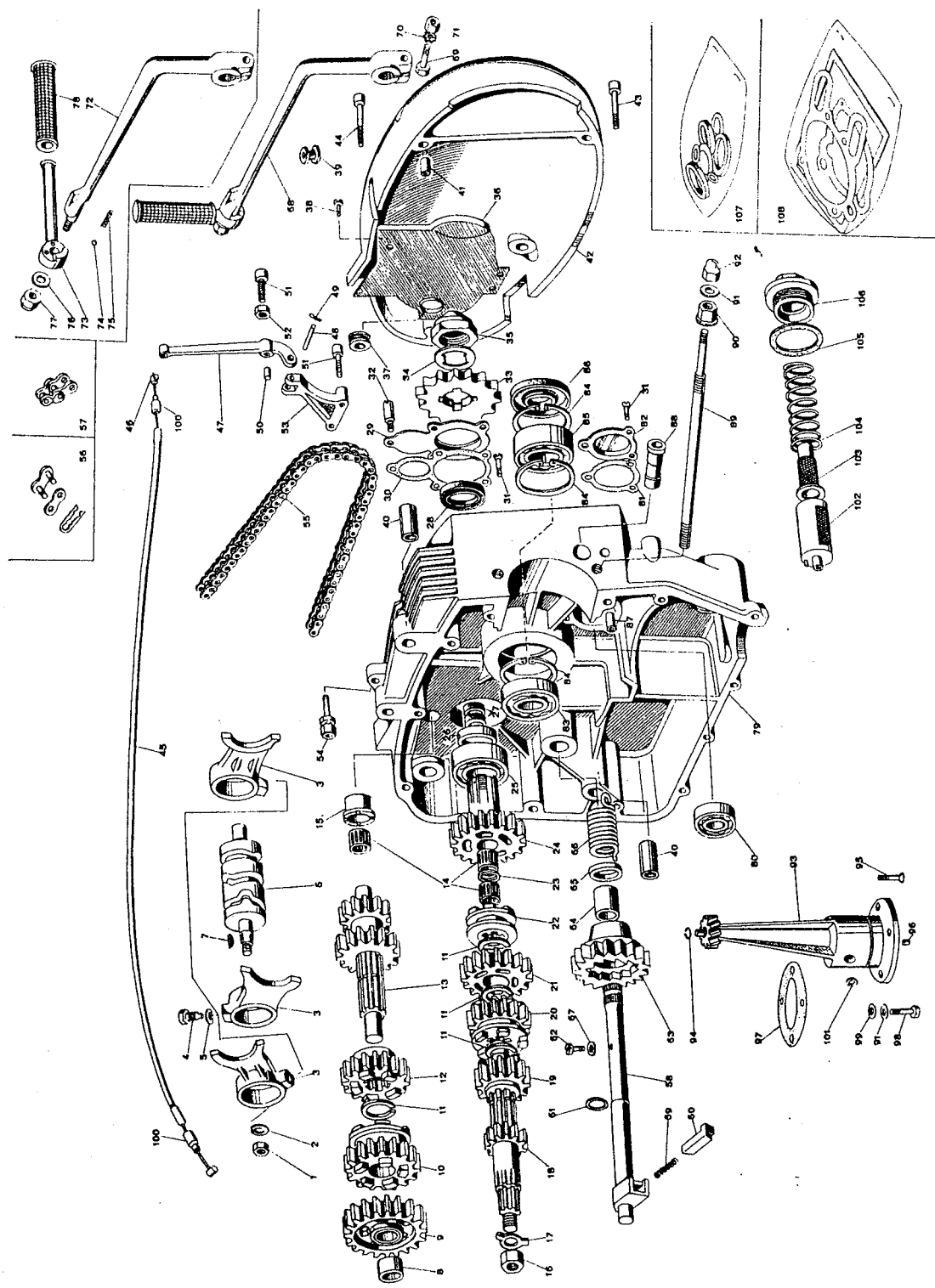


125cc and 250cc Barracuda

Engine Parts

Table #3

Ref. Part No.		Part No.		Description		Ref. Part No.		Part No.		Description	
No.	125cc	UI 315	250cc			No.	125cc	250cc			
1	UI 315	UI 315	UI 315	Nut	Nut	35	2533	2533			Nut
2	2558	2558	2558	Lock washer	Lock washer	36	3646	3646			Cover
3	2350	2350	2350	Shifting fork	Shifting fork	37	2807	2807			Rubber ring
4	2440	2440	2440	Bolt	Bolt	38	DT 49	DT 49			Screw (5x8)
5	2441	2441	2441	Washer	Washer	39	2572	2572			Rubber ring
6	3966	3966	3966	Desmodromic shaft	Desmodromic shaft	40	2380	2380			Centering bushing
7	2368	2368	2368	Woodruff key	Woodruff key	41	2383	2383			Centering bushing
8	3246	3246	3246	Bushing	Bushing	42	3941	3941			L. H. cover
9	3651	3651	3651	1st gear	1st gear	43	MU 1224	MU 1224			Allen screw (6x30)
10	3963	3963	3963	2nd gear	2nd gear	44	MU 1229	MU 1229			Allen screw (6x40)
11	2535	2535	2535	Seeger ring	Seeger ring	45	3716/2	3716/2			Clutch cable
12	3964	3964	3964	3rd gear	3rd gear	46	M 277	M 277			Nipple
13	3962	3962	3962	Secondary shaft	Secondary shaft	47	2234/1	2234/1			Clutch lever
14	3917	3917	3917	Roller cage	Roller cage	48	2236	2236			Pin
15	3930	3930	3930	Steel bushing	Steel bushing	49	MU-305	MU-305			Cotter pin
16	2092	2092	2092	Nut	Nut	50	2235/1	2235/1			Roller (7x10)
17	2102	2102	2102	Washer	Washer	51	MU 8034	MU 8034			Allen screw (6x20)
18	3957	3957	3957	Primary shaft	Primary shaft	52	2506	2506			Locking nut
19	3958	3958	3958	2nd gear	2nd gear	53	3608	3608			Lever support
20	3959	3959	3959	3rd gear	3rd gear	54	CS 229	CS 229			Cable adjuster
21	3960	3960	3960	4th gear	4th gear	55	H 8156/4	H 8156/4			Chain (108)
22	3965	3965	3965	5th gear sliding	5th gear sliding	56	SD 152	SD 152			Master link
23	2881/1	2881/1	2881/1	Spacer	Spacer	57	SD 152/A	SD 152/A			1 1/2 link
24	3961	3961	3961	5th gear	5th gear	58	3970	3970			Starter shaft
25	3928	3928	3928	Bearing	Bearing	59	3609/1	3609/1			Spring
26	3931	3931	3931	Spacer	Spacer	60	3612/1	3612/1			Bowl
27	2531	2531	2531	Oil seal	Oil seal	61	3874	3874			Oil seal
28	MU 744	MU 744	MU 744	Oil seal	Oil seal	62	B-1136	B-1136			Screw (5x12)
29	3929	3929	3929	Oil seal plate	Oil seal plate	63	3616/1	3616/1			Starter gear
30	2433	2433	2433	Gasket	Gasket	64	3618	3618			Bushing
31	2436	2436	2436	Screw (5x12)	Screw (5x12)	65	3971	3971			Spacer
32	3944	3944	3944	Special stud	Special stud	66	3610	3610			Spring
33	3790 (T 15)	2031	2031	Counter shaft spro.	Counter shaft spro.	67	MU 7559	MU 7559			Washer
34	2534	2534	2534	Washer	Washer	68	SD 365	SD 365			Kick starter pedal



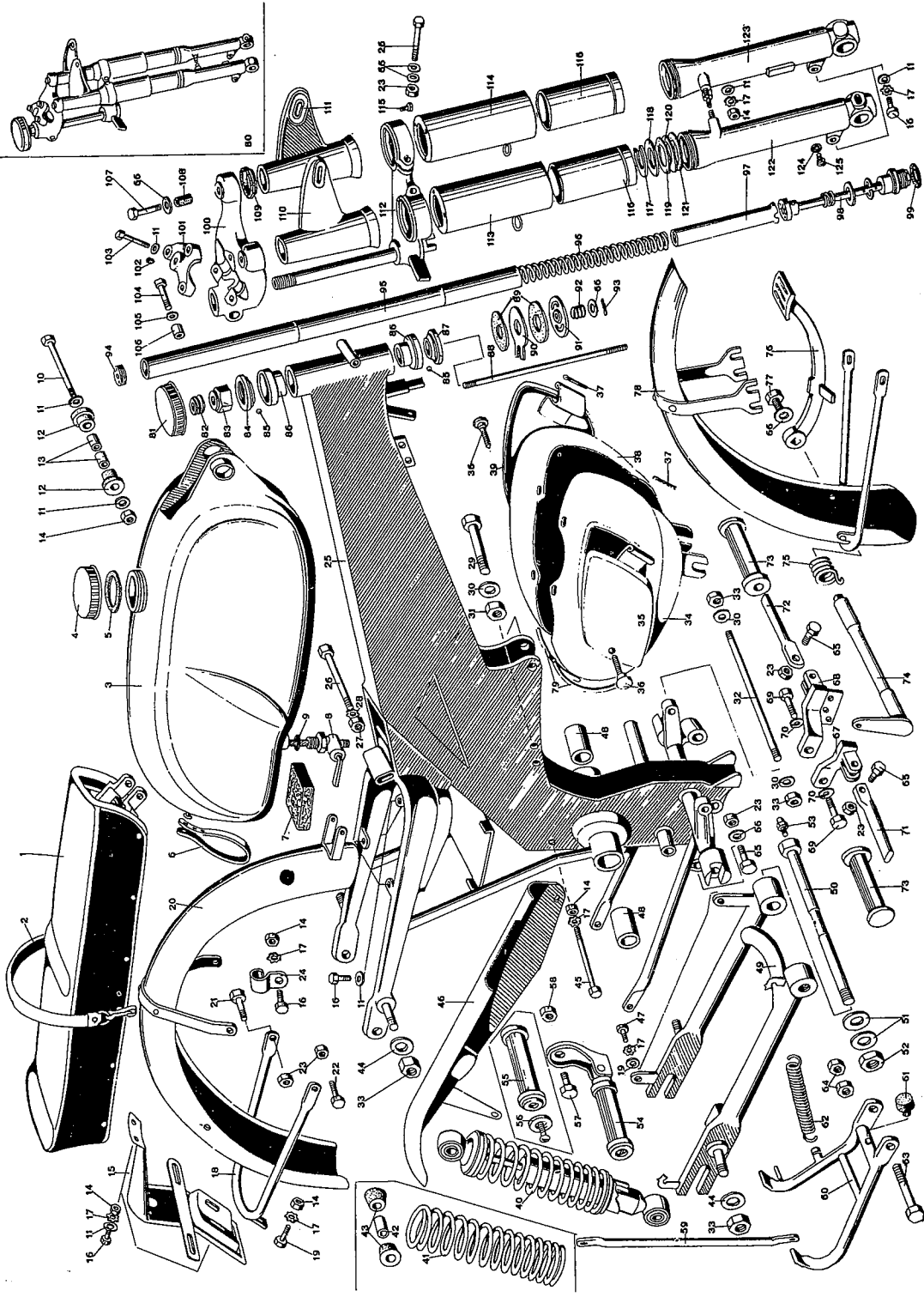
125cc and 250cc Barracuda

Engine Parts

Table #3

Ref. No.	Part No.	Part No.	Description	Ref. No.	Part No.	Part No.	Description
125cc	250cc	250cc		125cc	250cc	250cc	
69	MU 330	MU 330	Screw	103	3171	3171	Internal oil seal
70	MU 432	MU 432	Lock washer	104	2409	2409	Spring
71	2511	2511	Nut	105	2410	2410	Gasket
72	3881	3881	Kick starter lever	106	2411	2411	Oil plug
73	2565	2565	Lever	107	SD 606	SD 606	Oil seal set
74	MU 185	MU 185	Ball	108	SD 607	SD 609	Gasket set
75	3568	3568	Spring				
76	3898	3898	Washer				
77	3899	3899	Nut				
78	M 149	M 149	Kick starter rubber				
79	3952/125 *	3952/250 *	L. H. crank case				
80	L 746	L 746	Bearing				
81	2435	2435	Gasket				
82	3176	3176	Cover				
83	2911	2911	Bearing				
84	MU 1154	MU 1154	Seeger				
85	2874	2874	Bearing				
86	4033	4033	Oil seal				
87	3152	3152	Oil tube				
88	2294	2294	Bushing				
89	3320	3320	Stud				
90	3902	3902	Nut				
91	MU 332	MU 332	Flat washer				
92	3926	3926	Nut				
93	2391	2391	Oil pump				
94	MU 8067	MU 8067	Seeger				
95	2400	2400	Screw (4x35)				
96	2401	2401	Centering pin				
97	2398	2398	Gasket				
98	2402	2402	Screw (6x22)				
99	2541	2541	Gasket				
100	G 364	G 364	Cable nipple				
101	2403	2403	Oil seal				
102	3169	3169	External oil seal				

*Supplied only with 3951/125, 3951/250.



125cc and 250cc Barracuda

Frame Parts

Table #4

Ref. Part No.		Part No.	Description	Ref. No.	Part No.	Part No.	Description
No. 125cc		250cc			125cc	250cc	
1	4094	4094	Seat	35	4082/A	4082/A	R. H. tool box cover
2	G 255/1	G 255/1	Seat strap	36	BS 331	BS 331	Knob
3	4093	4093	Fuel tank	37	4082/B	4082/B	Cotter pin
4	4093/A	4093/A	Tank cap	38	4083	4083	L. H. tool box
5	4093/B	4093/B	Gasket	39	4083/A	4083/A	L. H. tool box cover
6	G 7597	G 7597	Rubber strap	40	H 8525	H 8525	Shock absorber
7	3702/1	3702/1	Felt	41	H 8525/A	H 8525/A	Spring
8	4097	4097	Petcock	42	H 8525/B	H 8525/B	Bushing
9	2598	2598	Gasket	43	L 3209/2	L 3209/2	Rubber grommet
10	2525	2525	Bolt (6x105)	44	2517	2517	Washer
11	MU 332	MU 332	Washer	45	3323	3323	Bolt
12	2568	2568	Rubber grommet	46	4090	4090	Chain cover
13	2569	2569	Sleeve	47	MU 324	MU 324	Bolt (6x10)
14	MU 280	MU 280	Nut	48	2162	2162	Bushing
15	M 255	M 255	License plate	49	4041	4041	Swing arm
16	MU 235	MU 235	Bolt (6x12)	50	4042	4042	Shaft
17	MU 432	MU 432	Lock washer	51	2186	2186	Trust washer
18	4088	4088	R. fender bracket	52	2187	2187	Nut
19	MU 84	MU 84	Bolt (6x14)	53	3030	3030	Grease nipple
20	3694/1	3694/1	Rear fender	54	G 229	G 229	Rear foot peg
21	L 840	L 840	Bolt (8x25)	55	G 229/1	G 229/1	Rubber foot peg
22	H 8312	H 8312	Bolt (8x28)	56	G 229/2	G 229/2	Screw and washer
23	MU 187	MU 187	Nut	57	M 129	M 129	Bolt (10x16)
24	3690	3690	Clamp	58	MU 7929	MU 7929	Nut
25	4038	4038	Frame	59	3989	3989	Muffler bracket
26	G 217	G 217	Bolt (8x75)	60	2692	2692	Center stand
27	2379	2379	Nut	61	2595	2595	Rubber plug
28	MU 589	MU 589	Lock washer	62	2600	2600	Spring
29	2545	2545	Bolt (10x50)	63	3688	3688	Bolt
30	MU 1559	MU 1559	Washer	64	CS 431	CS 431	Nut
31	2546	2546	Nut	65	3704	3704	Bolt (8x30)
32	3873	3873	Stud	66	MU 612	MU 612	Washer
33	L 16	L 16	Nut	67	3980	3980	R. H. foot peg support
34	4082	4082	R. H. tool box	68	3981	3981	L. H. foot peg support

